

### Planta Baja

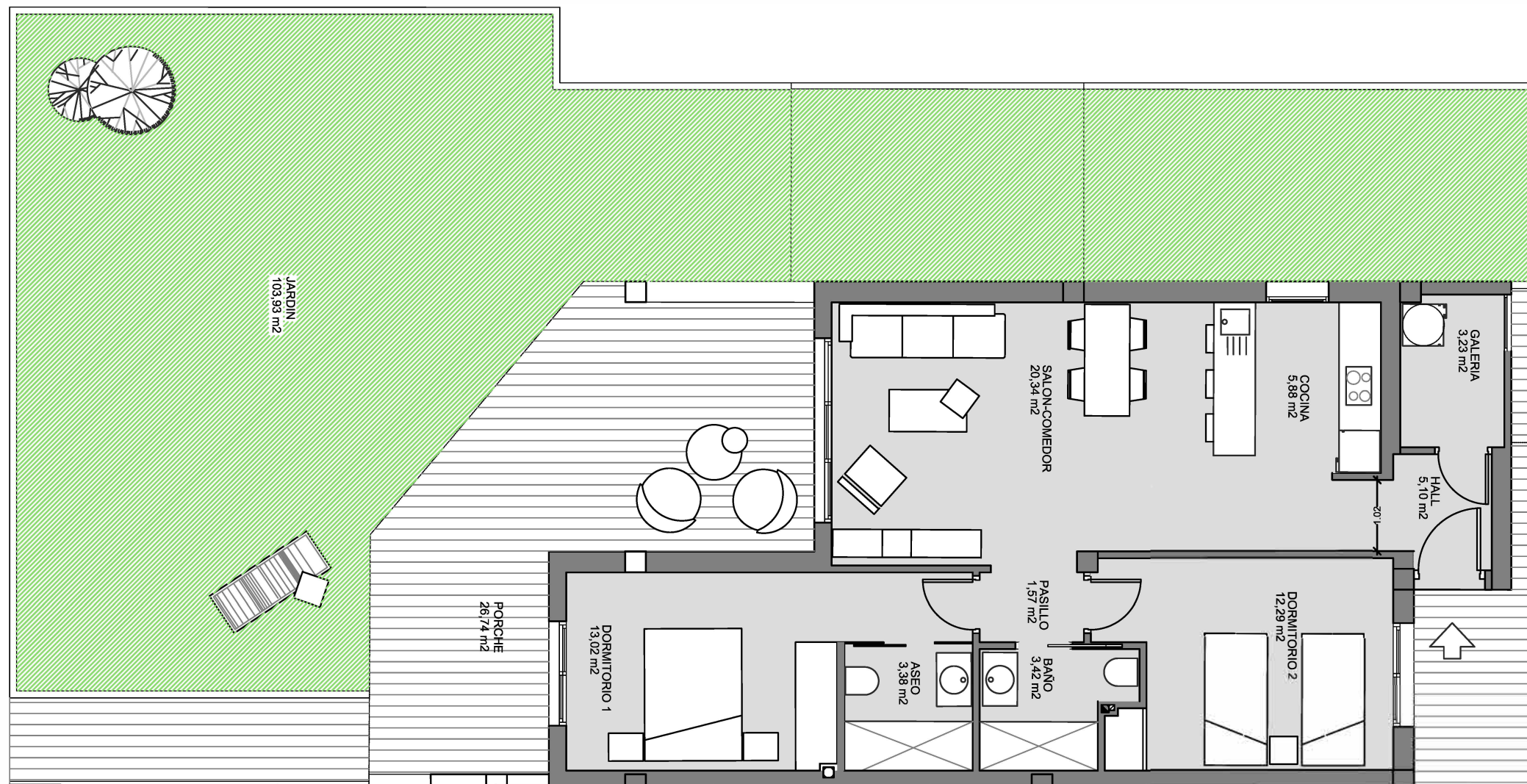
**Biq 01 N°01**  
 Superficies (m2)

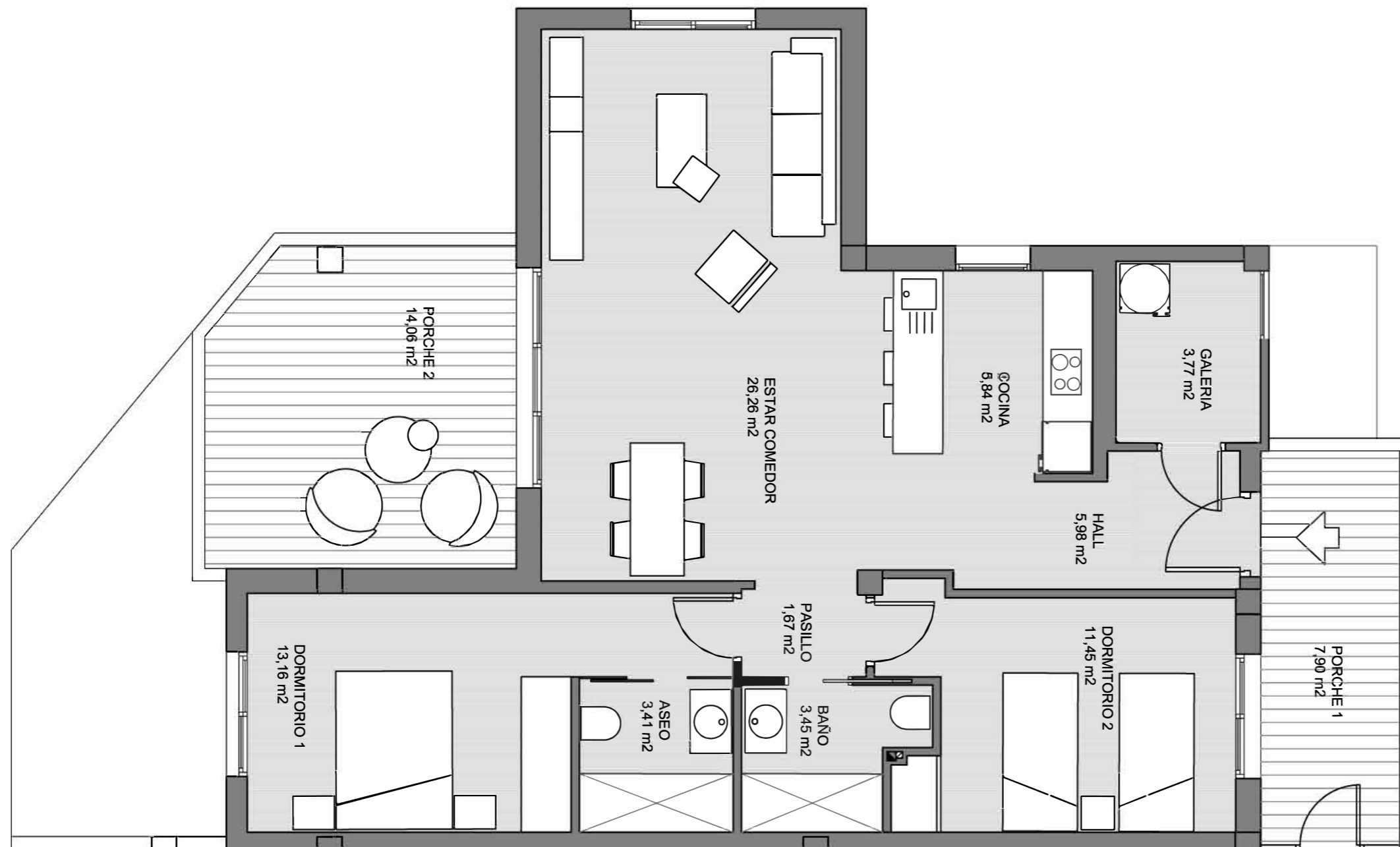
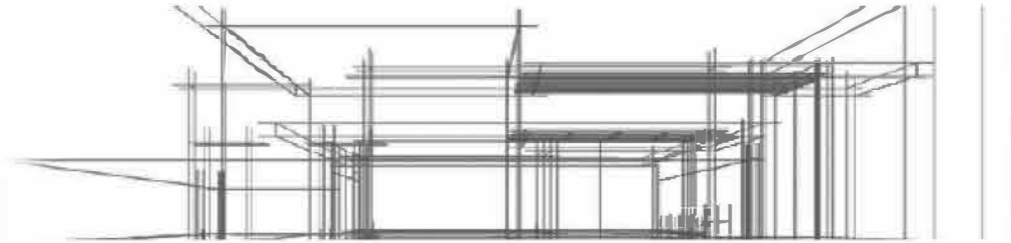
Vivienda .....81,39 \*  
 Porche ..... 26,74

**Total\_ 108,13**

Jardín ..... 103,93

Sup. construidas \*  
2 dormitorios  
2 baños





## Planta Primera

**Blq 01 N°02**

Superficies (m<sup>2</sup>)

Vivienda .....88,95 \*

Porches ..... 21,96

**Total\_ 110,91**

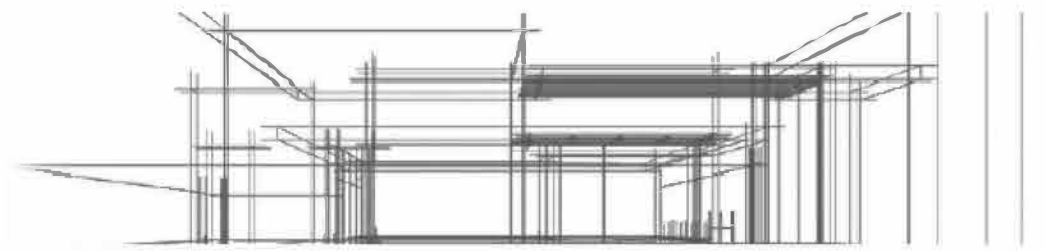
Sup. construidas \*

2 dormitorios

2 baños

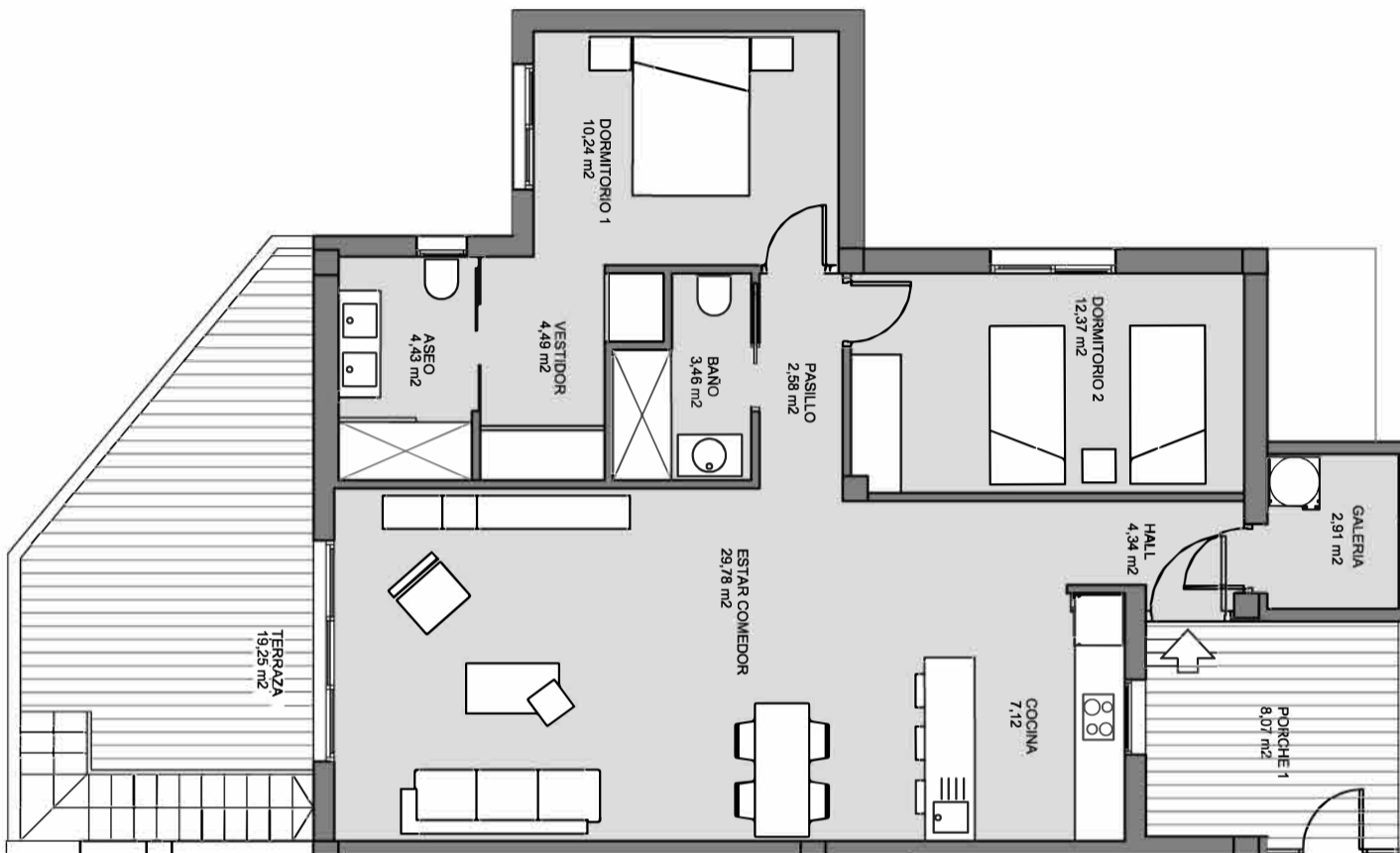


# AREA beach III "el Raso"



EXCLUSIVE HOMES - PERSONALIZED ATTENTION

## Planta Cuarta y Solarium



**Bldg 01 N°05**  
Superficies (m2)

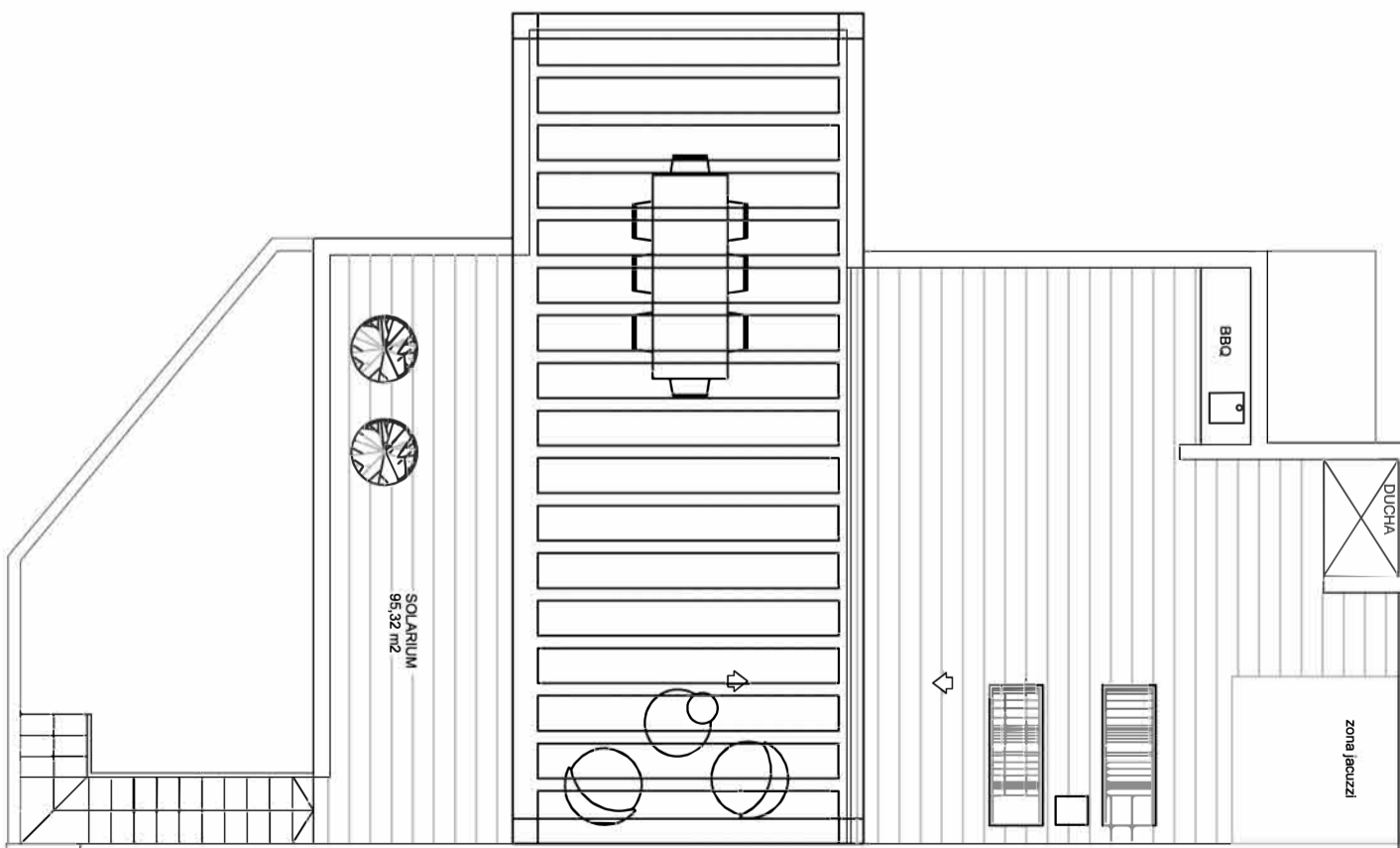
Vivienda .....95,10 \*  
Terraza ..... 19,25  
Porche ..... 8,07

**Total\_ 122,42**

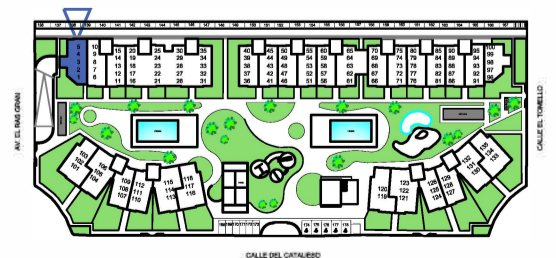
Solarium ..... 95,32

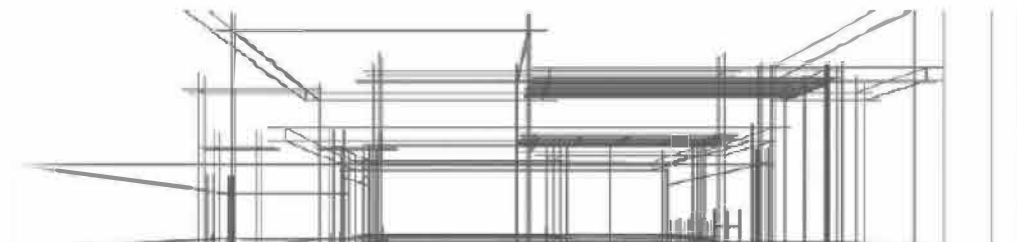
Sup. construidas \*

2 dormitorios  
2 baños



Norte  
↑





### Planta Baja

**Blq 01 N°06**

Superficies (m2)

Vivienda .....78,38 \*

Porche ..... 18,84

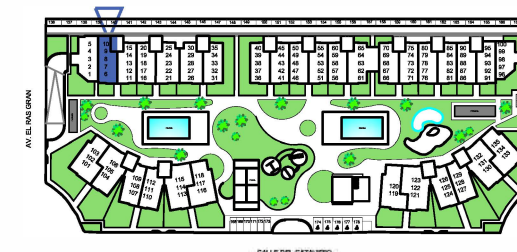
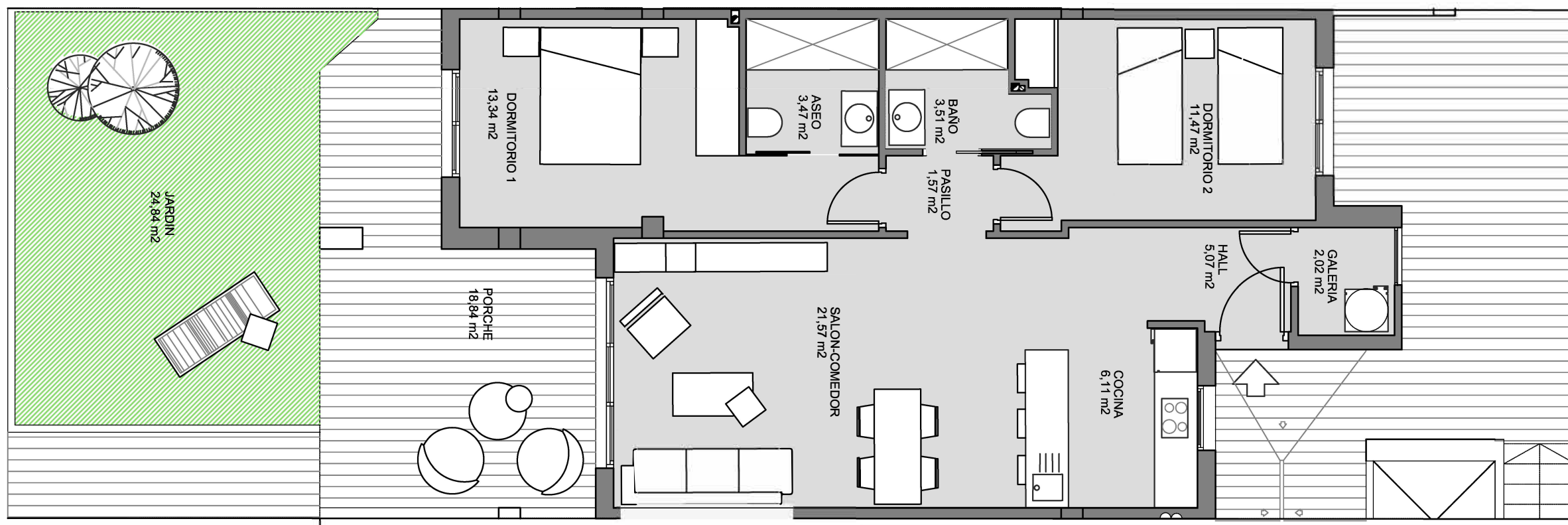
**Total\_ 97,22**

Jardín ..... 24,84

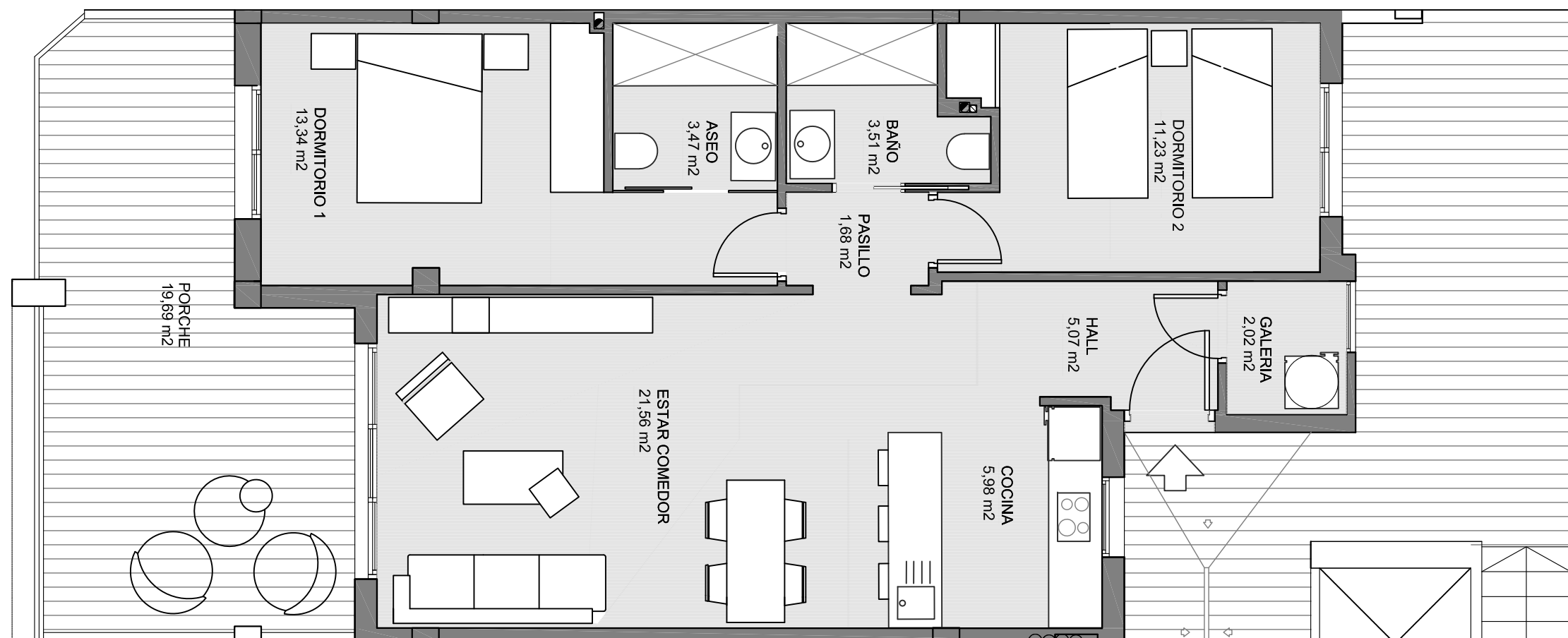
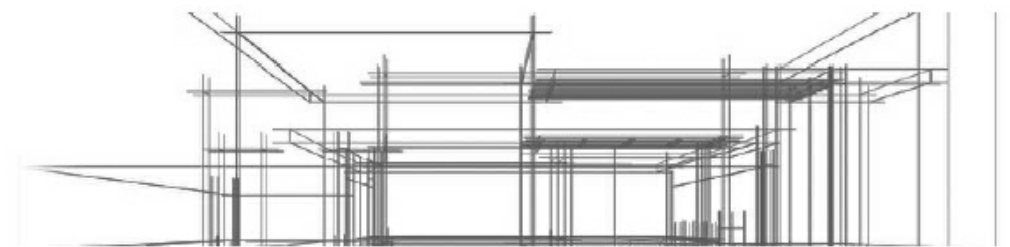
Sup. construidas \*

2 dormitorios  
2 baños

Norte



Guardamar Del Segura (Alicante)  
Parcela ZR-42-43\_Sector ZO-4



### Planta Primera

**Blq 01 N°07**

Superficies (m<sup>2</sup>)

Vivienda .....77,88 \*

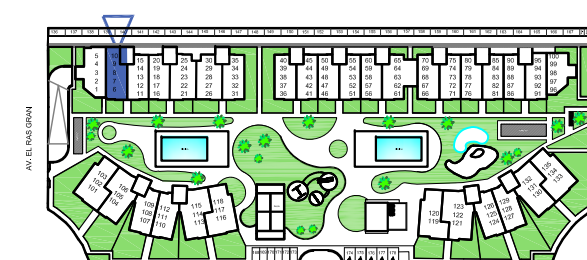
Porche ..... 19,69

**Total\_ 97,57**

Sup. construidas \*

2 dormitorios  
2 baños

Norte



Guardamar Del Segura (Alicante)  
Parcela ZR-42-43\_Sector Z0-4

# AREA beach III "el Raso"

EXCLUSIVE HOMES - PERSONALIZED ATTENTION



## Planta Cuarta y Solarium

**Blq 01 N°10**  
Superficies (m2)

Vivienda .....84,14 \*  
Terraza ..... 12,28

**Total\_ 96,42**

Solárium ..... 86,30

Sup. construidas \*  
2 dormitorios  
2 baños

